

911 SIGNAL TECHNOLOGY INC.

Tel:+86-574-89017911 +86-400-6757-911

Fax:+86-574-82822560

Email:sales@911signal.com

Website:www.911signal.com

Add:Room701-702,Hengwei Building,No.258,
Tangao Lane,
Shounan Subdistrict,Yinzhou Area,Ningbo
City,Zhejiang,China.

911 *SIGNAL*[®]

**Worklight
V18**



CAUTION



Keep away from corrosive substances.

Keep away from fire.



Avoid direct look into the light.



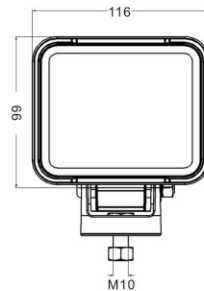
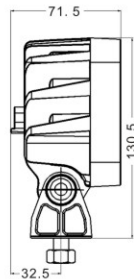
Keep hands away from operating lights to prevent burns.

Disassembly is not allowed.



FEATURE

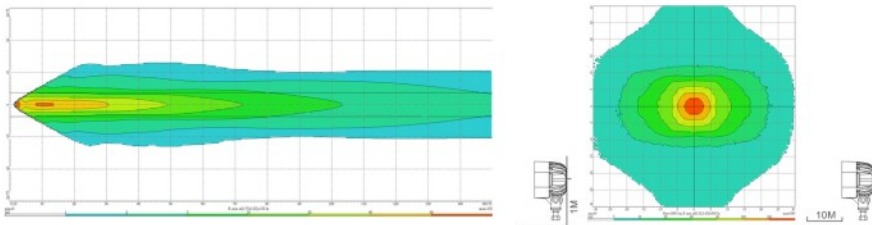
- With its uniquely-shaped heatsink, V18 dissipates the heat generated by the LEDs regardless of the mounting positions.
- Double coated aluminum alloy housing makes V18 stay strong under extreme weathers and conditions.



V18-LR PRODUCT SPECIFICATION

Item	Voltage	Power	Lux	Lumen	LED	Color Temp	Certificate
120301	DC 9-33V	30W	540lx(10M)	1800lm	6Pcs 5W LED	7000K	R10

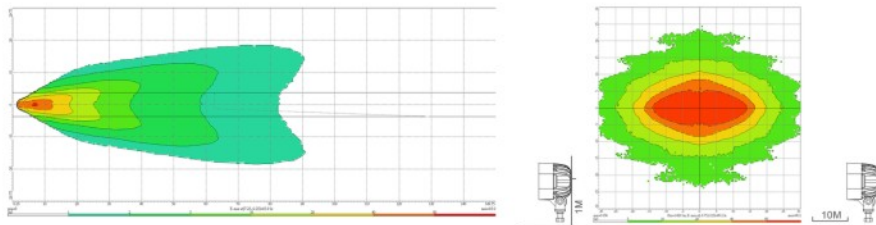
Item	120301
Long-Range Illumination	x
Cable	x



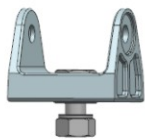
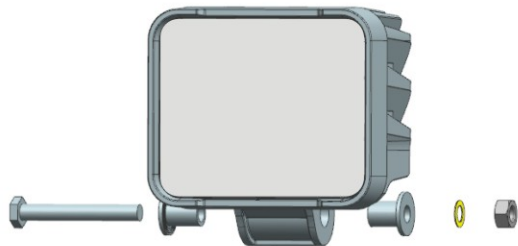
V18-CR PRODUCT SPECIFICATION

Item	Voltage	Power	Lux	Lumen	LED	Color Temp	Certificate
120351	DC 9-33V	30W	86lx(10M)	1800lm	6Pcs 5W LED	7000K	R10

Item	120351
Close-Range Illumination	x
Cable	x



COMPONENTS



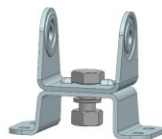
① (Standard)



② (Optional)



③ (Optional)



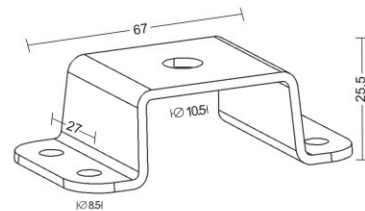
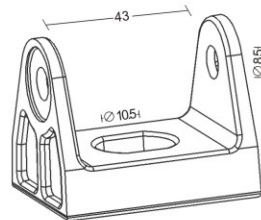
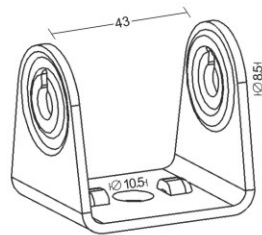
④ (Optional)



⑤ (Optional)

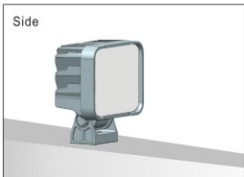
You can choose from five brackets.

BRACKETS

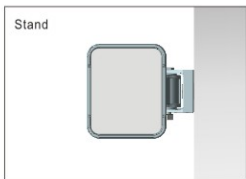


MOUNTING OPTIONS

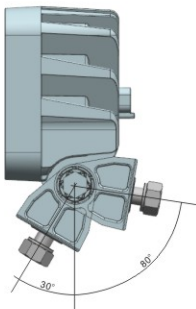
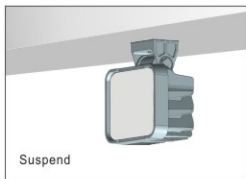
Side



Stand

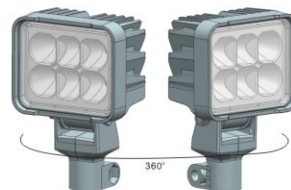


Suspend



MOUNTING OPTIONS

Only vertical mount is allowed.



APPLICATION



Tractor



Combined Harvester



Excavator



Fire Truck



Tow Truck



Forwarder



Truck



Forklift



Ambulance



Snow Plough

WIRING DIAGRAM

