

NEPTUNE i 18



911 Singnal Technology Inc.

Add:Room 701-702,Hengwei Building,No.258,
Tiangao Lane,Shounan Subdistrict,Yinzhou
Area,Ningbo City,Zhejiang,China.

Tel:+86 574 89017911 +86 400 6757911
Fax:+86 574 82822560
Email:sales@911signal.com
Website:www.911signal.com

Neptune i8-X4
V1.0

911 SIGNAL®

SAFETY INSTRUCTIONSP3

IMPORTANT WARNINGP4

PRODUCTS SPECIFICATIONP5-7

DIMENSIONS

FEATURES

ELECTRICAL PARAMETERS

ACCESSORY LIST

LED INDICATORS

BUTTON FUNCTIONS

INSTALLATIONP8-10

MAGNET BASE INSTALLATION

WIRING

APP DOWNLOADP11

DEVICE CONNECTION METHODP11-12

SAFETY PRECAUTIONS

The Manual provides all the necessary information for carrying out correct installation. Be sure to read this Manual thoroughly before proceeding with the installation and/or operation of the product so as to prevent serious injury or damage.

1. Proper installation of the lightbar requires the installer to have a good knowledge of automotive electronics, systems and procedures. Necessary training is required for operators to ensure safety of emergency personnel and the public.
2. Failure to use specified installation parts and/or hardware will void the product warranty.
3. Make a drilling and wiring plan before installation. Please guarantee no vehicle components or other vital parts could be damaged by the drilling process. DO NOT install this product or route any wires in the Air Bag Deployment Zone. Refer to your vehicle Owner's Manual for the location of any air bag deployment zones.
4. The product must be properly grounded in case of any high current arcing. Make sure to follow all wiring guidelines provided in the manual to ensure safety and productivity.
5. The vehicle operator should ensure daily that the product is securely fastened to the vehicle and all features work correctly.
6. The use of this or any other warning device does not ensure all drivers can or will observe or react to an emergency warning signal. Never take the right-of-way for granted. It is your responsibility to be sure you can proceed safely before entering an intersection, drive against traffic, respond at a high rate of speed, or walk on or around traffic lanes.
7. The equipment is intended for use by authorized personnel only. The user is responsible for understanding and obeying all laws regarding emergency warning devices. Therefore, the user should check all applicable city, state, and federal laws and regulations. The manufacturer assumes no liability for any loss resulting from the use of this warning device.
8. It is recommended to keep this Manual on hand for future use like relocating or repairing the unit.

IMPORTANT WARNING

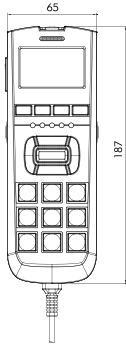


- Your hearing and the hearing of others, in or close to your emergency vehicle, could be damaged by loud sounds.
- All effective sirens and horns produce loud sounds (110dB) that may cause permanent hearing loss. Always minimize your exposure to siren sound, roll up your windows and wear hearing protection device.
- Do not sound the siren indoors or in enclosed areas where you and others will be exposed to the sound. Only use the siren for emergency response situations.

Service and Maintenance

For warranty service, contact your local Distributor. The factory can and will service your equipment or assist you with technical problems that cannot be handled satisfactorily and promptly locally.

CONTROLLER DIMENSIONS



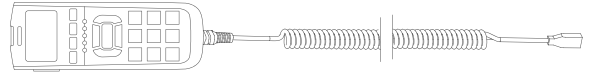
FEATURES

- Custom controller functions
- APP remote control
- CAN bus technology
- Over-the-air(OTA) updates
- 20s recording loop playback, press to talk(PTT) function
- Speaker volume adjustment, Low voltage protection
- Synchronous display of the working status of lightbars
- Magnetic base is easy to take and place
- 30 minutes standby, low power consumption, backlight off
- Batch installation at the refitting factory via APP batch configuration
- The button symbol is wearproof and can be customized by the customer
- Products are suitable for the following industry vehicles: firefighting, EMS, civil affairs, public security, anti-terrorism.

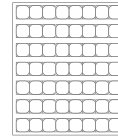
ELECTRICAL PARAMETERS

Voltage:	12V
Power:	1.5W

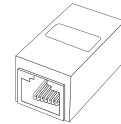
ACCESSORY LIST



X1 controller



X1 set of stickers



X1 Network adapter



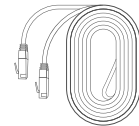
X1 magnet holder



X2 screws



X1 set of button caps



X1 extension cable (5M)

LED INDICATORS

1. Short press POWER key to turn on, extended press POWER key 2s to turn off
2. Power on, 5 LEDs blink to indicate the current sound volume for 3s
3. Key 1 volume -, key 2 volume +, five LEDs continuously display 3s according to the settings of the volume level. ((5 levels in total))
4. Press and hold button 3 for 2s to make a "Di" sound to start recording. Every 4s a LED light on, the fifth LED flashes once per second, at most 20s can be recorded.
5. Key 4 for recording loop playback, siren overrides recording playback.
6. PTT: Press and hold to talk. PTT overrides recording playback and siren sound.
7. 1-18 keys, once the function is activated, the key backlight turns green.
8. Red backlight automatically extinguished after 30 minutes without key trigger.
9. 5 LEDs located in the middle flashing according to the activated function of lightbar.



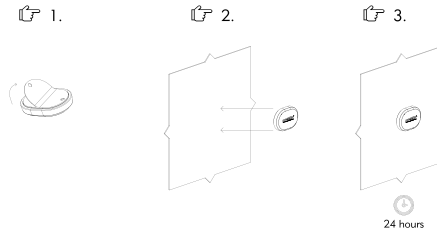
BUTTON FUNCTIONS

1. on/off: short press to power on, long press to power off
2. Microphone: recording, PTT, voice input port
3. VI background screen: custom and high-tech background design with backlight
4. PTT (press to talk): Press to cut off other sounds, and only collect microphone sounds
5. Volume -, volume +: volume control, a total of 5 levels; the lowest is night mode
6. Recording: a total of 20S recording function
7. Recording playback: recording loop playback
8. Red backlight: After power on, the backlight is red
9. Green backlight: functional use, the backlight is green
10. Low battery reminder: When the vehicle is in the low battery mode, all the backlights of the controller flash to remind, and the lightbar is turned off, and the battery is reserved for the radio or other emergency equipment
11. Standby mode: The controller is not used for 30 minutes and the backlight is off. Controller can be activated by pressing any key

MAGNET BASE INSTALLATION

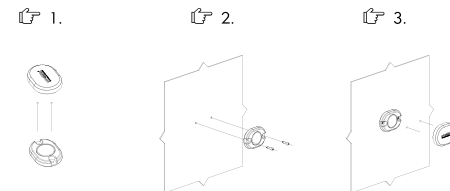
3M installation:

1. Tear off the 3M adhesive on the release paper.
2. The base is fixed in the right place.
3. Waiting for 24 hours, until the tape adhesion to reach the best state.



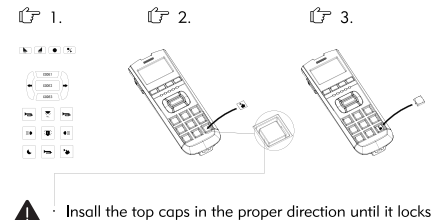
Screw Installation

1. Remove the silicone sleeve on the base.
2. Use the screws to fix the base in the right position.
3. Put on the silicone sleeve and ready to use.



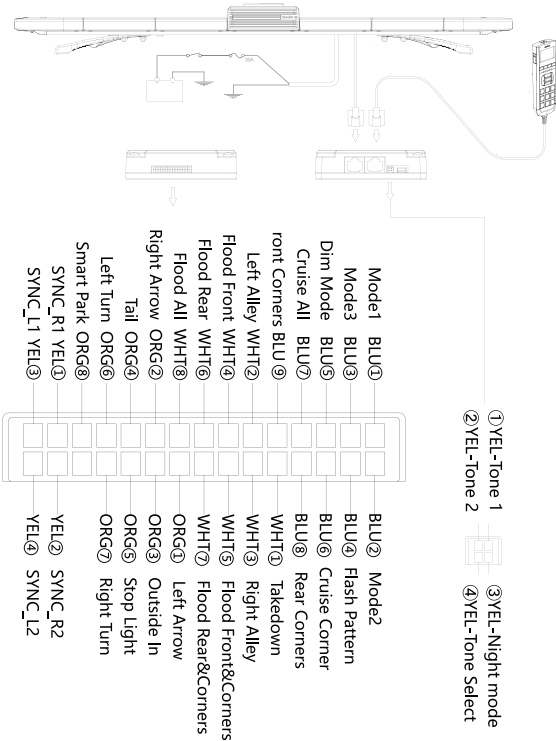
Switch character installation

1. Choose stickers for corresponding functions
2. Attach the stickers onto each button
3. Install the top caps accordingly



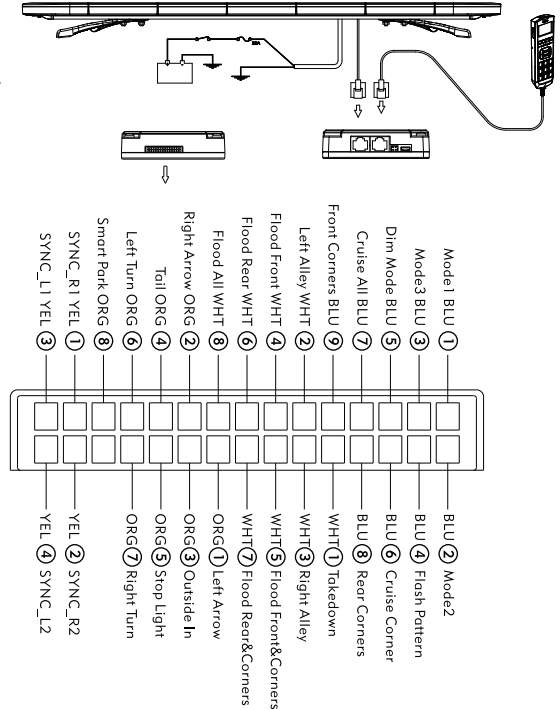
WIRING

Controller and lightbar + speaker



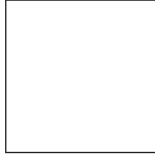
! Without handheld controller, activate the lighting and acoustic functions through wiring.

Controller and lightbar



! Without handheld controller, activate the lighting functions through wiring.

APP DOWNLOAD



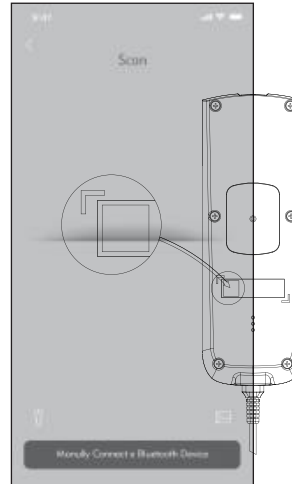
DEVICE CONNECTION METHOD

STEP1



Add Product

STEP2



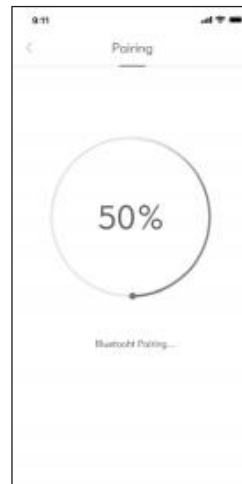
Scan the QR code on the back of the controller to add the device

STEP3



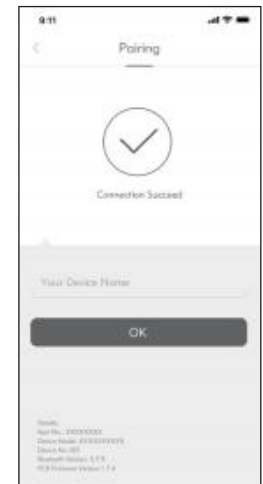
Next

STEP4



Bluetooth Pairing...

STEP5



OK