

911 SIGNAL[®]



LOKI

Bendable for mounting
on flat or curved surfaces

USER GUIDE

1.Product Description

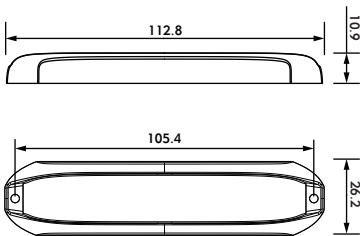
LOKI silicone bendable LED light has effective resistance to impact and corrosion . It can bend backward up to 30° . Better anti-yellowing and antioxidant lens design than traditional ones. 3M VHB tape mounting and screw mounting.

2.Technical Specifications

Product Name	LOKI
Max Power	10W
Voltage	DC 10-33V
Flash Pattern	Single 19/ Dual 12
IP Rating	IP67+IP69K
Operating Temperature	-30°C to +70°C
Dimensions	100*23*10mm(Bezel-Free)
Certifications	ECE R65 Class 1, ECE R10, SAE J595, T13

3.Product Introduction

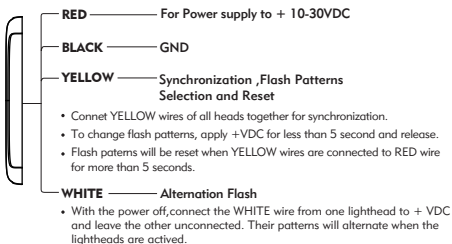
3.1. Dimensions



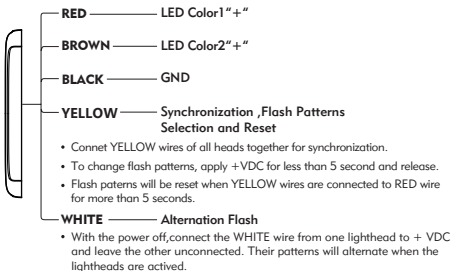
3.2. Wirings

A. Function Wiring

Single Color

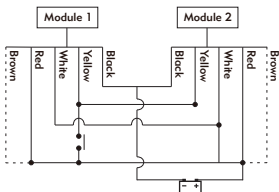


Dual Color

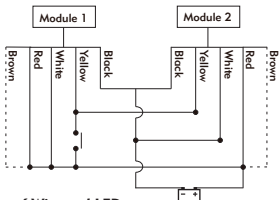


B. Products Wiring

Pattern Synchronization



Pattern Alternation



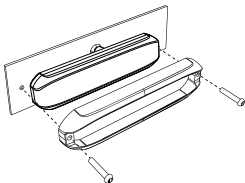
C. Color Sheet of Wire and LED

Dual Color

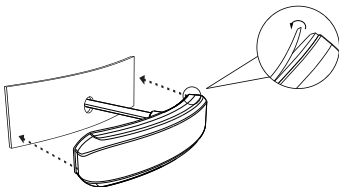
LED Combinations \ WIRE	RED	BROWN
024118TAW	W	A
024118TBW	W	B
024118TRW	W	R
024118TAR	A	R
024118TAB	A	B
024118TBR	R	B

4. Mounting

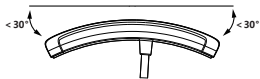
A. Screw Mounting With Included Bezel



B. 3M VHB Tape Mounting



Warning



Max 30° angle from center



No Twisting



No Pulling

911 Signal Technology Inc.



Manufacturer: Ningbo Vasa Intelligent Technology Co., Ltd
Factory Address: Building 33, No. 136 Yuhai East Road,
Hangzhou Bay New District, Ningbo, Zhejiang, China
Tel: 0574-82822561
Email: sales@911signal.com
Website: www.911signal.com